

SRSLY Review

Summary Observations

February 25, 2019

Setting the Stage

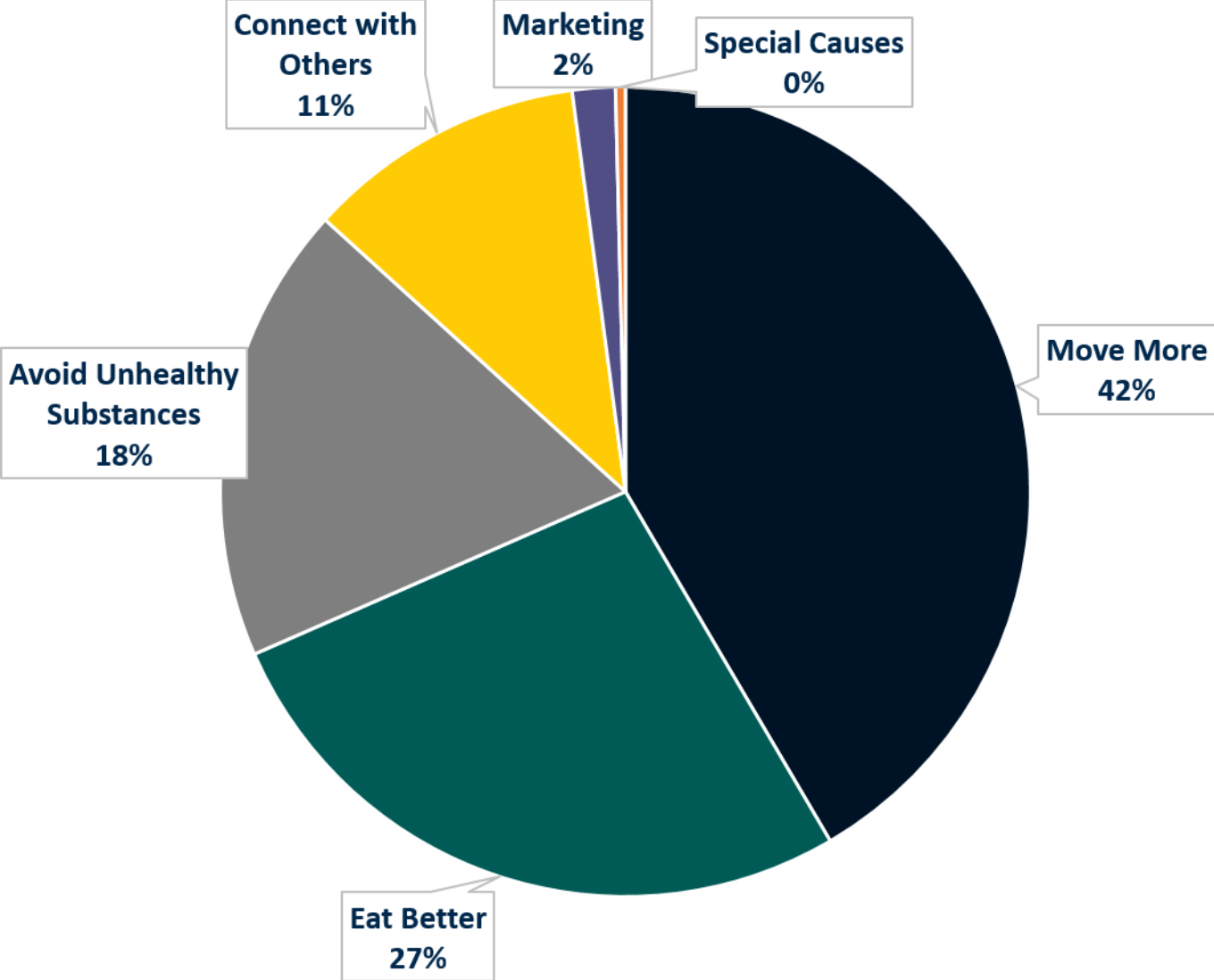
- Some interventions have required significant funding over multiple years - SRSLY is one such example
- CSI observed poor attention to detail in plan intervention tables as well as other inconsistencies (mid-2017)

Setting the Stage

- A closer look at expenditures and impacts was initiated to uniformly collect information across SRSLY programs (2018)
- SRSLY review subcommittee formed to consider available information and determine next steps (December – January)

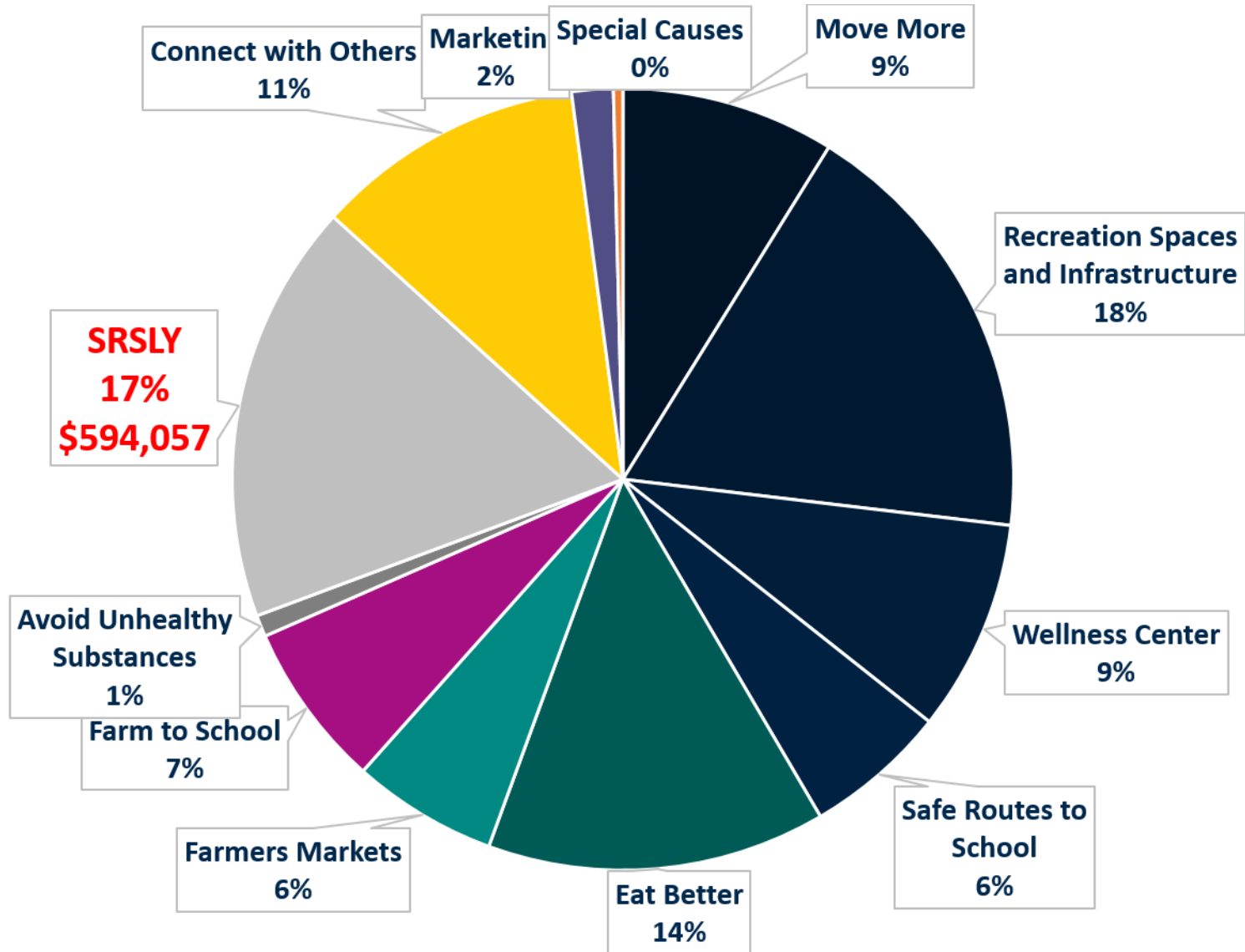
Coalition Investment by Element, Y1-Y7

\$3,415,893



Coalition Investment by Element, Y1-Y7

\$3,415,893



Overarching Questions

- How do we judge our long term 5HF Coalition investments?
- What do we consider demonstrated value for our investments?
- How do we reconcile multi-year funding strategies with 5HF financial realities?

Our Approach

Three main areas of discussion:

- SRSLY program process issues
- Outcomes / supporting data
- Investing all our substance abuse funding in a single program, aimed at youth

SRSLY Program Process Issues

- SRSLY implementation – focus on youth only; little attention to vaping / tobacco; inconsistencies in program reporting
- Coalition decision making – potential to dominate coalition priority setting; reluctance to divert funds from program aimed at reducing substance abuse by youth
- Economies of scale – opportunities for greater efficiencies across programs

SRSLY Outcomes / Supporting Data

- Evaluations conducted (March 2018) by Western Michigan University
 - Dexter
 - Stockbridge

SRSLY Outcomes / Supporting Data

WMU Evaluation major findings:

- Participants like SRSLY
- Parents like SRSLY
- Some decline in alcohol use was observed

Limitations:

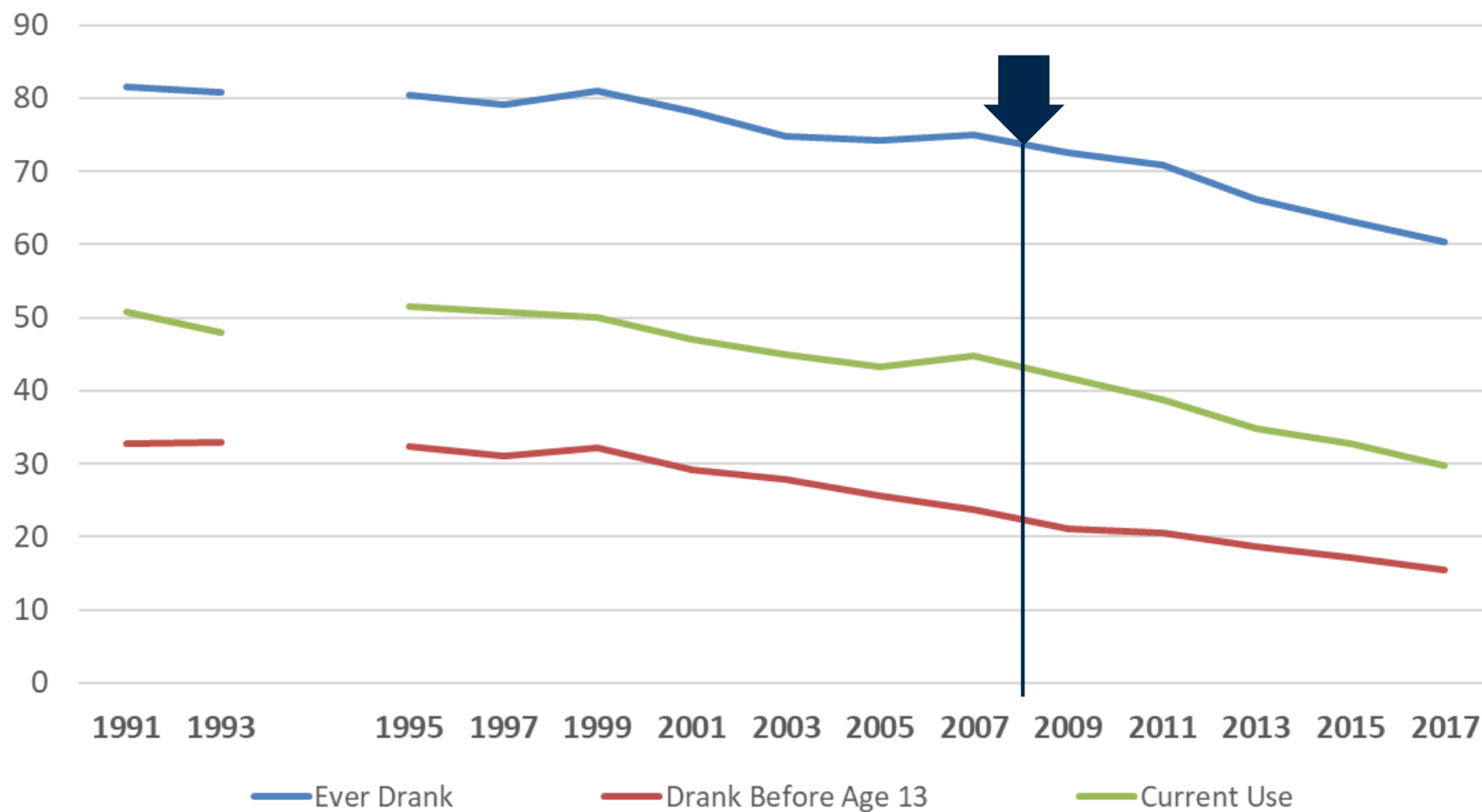
- Small sample sizes
- No comparison group

SRSLY Outcomes / Supporting Data

WMU Evaluation major findings :

- Participants like SRSLY (**n=57**)
- Parents like SRSLY (**n=15**)
- Some decline in alcohol use was observed
National trends indicate likewise
- Grass Lake has similar indicators of substance use
without the benefit of SRSLY

Trends in the Prevalence of Alcohol Use National Youth Risk Behavior Survey (YRBS): 1991—2017



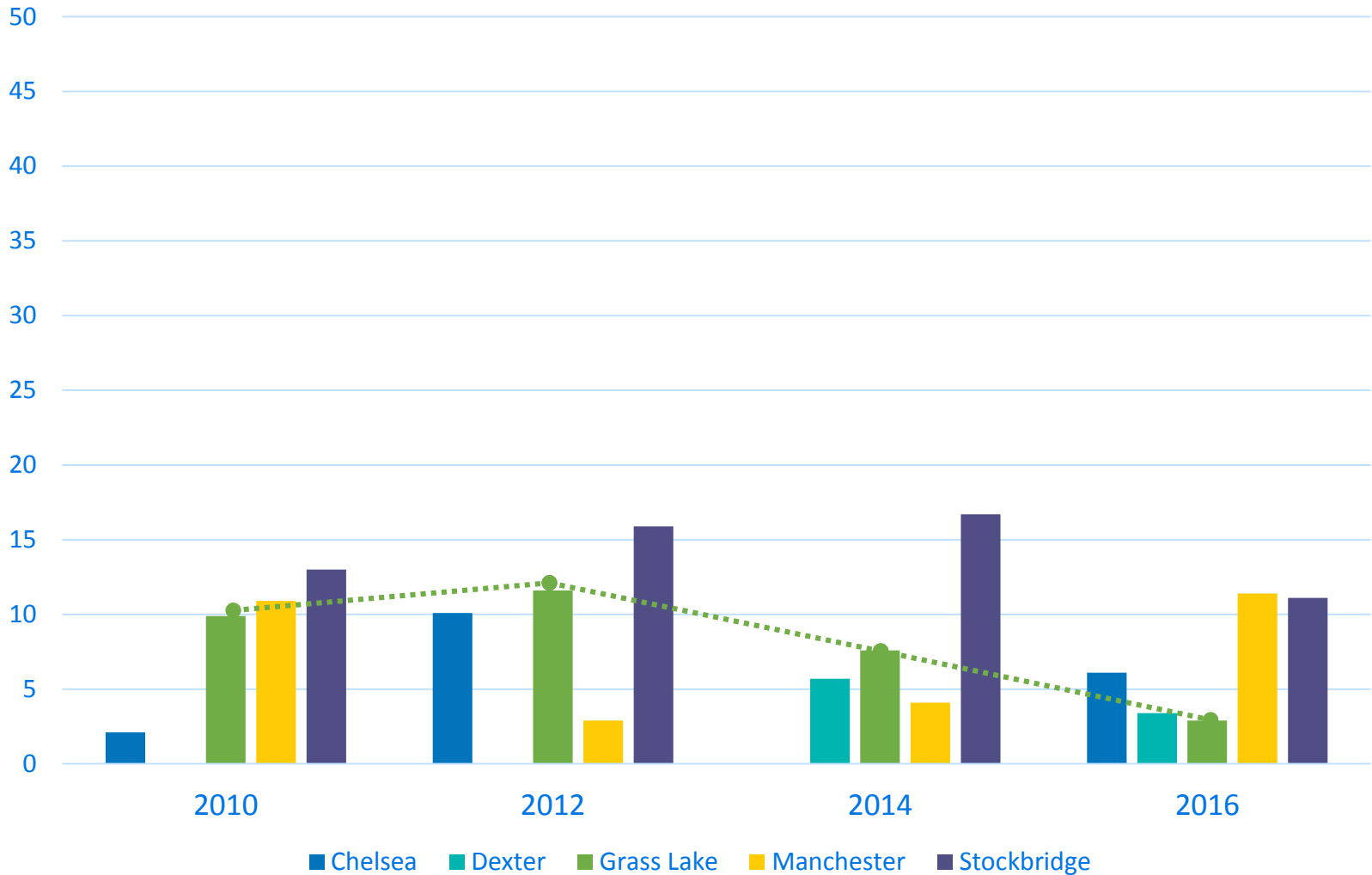
The national Youth Risk Behavior Survey (YRBS) is conducted every two years during the spring semester and provides data representative of 9th through 12th grade students in public and private schools throughout the United States.

https://www.cdc.gov/healthyyouth/data/yrbs/pdf/trends/2017_alcohol_trend_yrbs.pdf

SRSLY Outcomes / Supporting Data

- We looked at Michigan Profile for Healthy Youth (**MiPHY**) data in greater depth to discern whether trends may exist that could suggest SRSLY impacts
- MiPHY data are based on voluntary response to in-school survey among students
- Low participation leads to very low response rates upon which outcome metrics can be based

Percentage of 9th grade students who used marijuana during the past 30 days, 2010-2016



	9th grade							
	2010		2012		2014		2016	
	%	Num.	%	Num.	%	Num.	%	Num.
Chelsea	2.1	4	10.1	19			6.1	12
Dexter					5.7	14	3.4	9
Grass Lake	9.9		11.6		7.6		2.9	1
Manchester	10.9	11	2.9	3	4.1	3	11.4	10
Stockbridge			15.9	10	16.7	9	11.1	5

Summary Observations

Several concerns exist about the SRSLY program:

- data quality / reliability
- the only 5HF AUS intervention - limited to youth
- lack of focus on vaping/tobacco
- program cost
- sustainability
- limited multi-community coordination

Summary Observations

- It is unclear whether the SRSLY program is making an impact on youth substance use
- There is a need for:
 - improved data to evaluate SRSLY
 - focused efforts toward sustainability and stewardship of SRSLY
 - diversification of the SRSLY funding portfolio

Overarching Questions

- How should funding to long term 5HF Coalition investments be structured ?
 - stipulate time limitations up front?
 - ‘sunset’ current funding ?
- What do we consider demonstrated value for our investments?
 - established infrastructure
 - brand recognition in 5H communities
 - is good community PR an adequate ‘outcome’?
- How do we reconcile multi-year funding strategies with 5HF financial realities?

Next Steps

- CSI Discussion (March 14)
- Community Advisory Committee (March 28)
- Other coordination